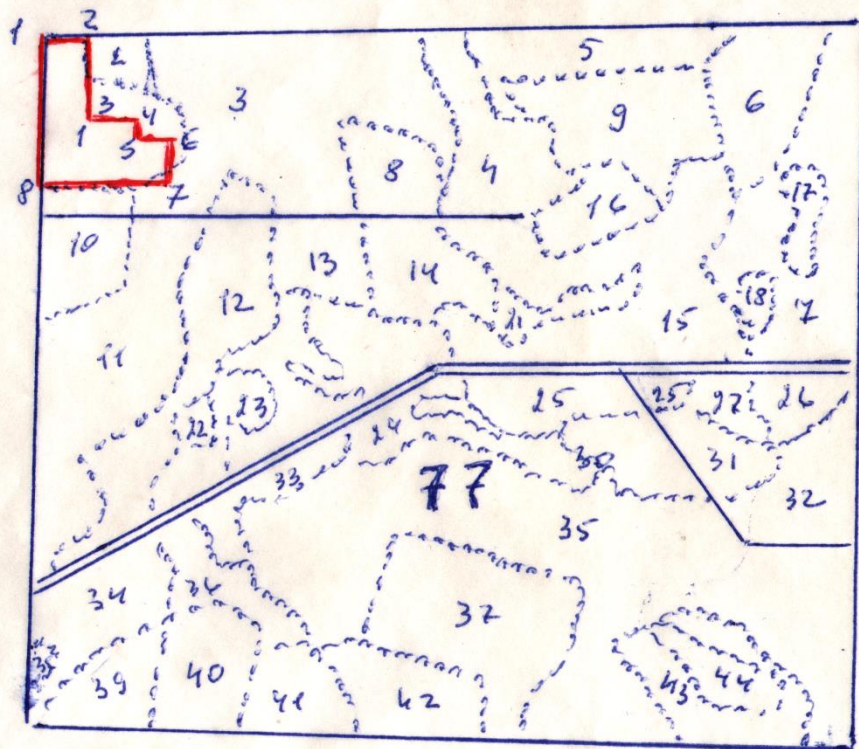


KB N. 77. by N. I. $S = 1,852m$



1-2 CB: 85°
50m.

2-3 KB: 80°
100m.

3-4 CB: 85°
47m.

4-5 KB: 80°
20m.

5-6 CB: 85°
48m.

6-7 KB: 80°
80m.

7-8 KB: 83°
14m.

8-1 CB: 90°
205m.